

FUJITEC

NPHS

Non Proprietary Hydraulic System

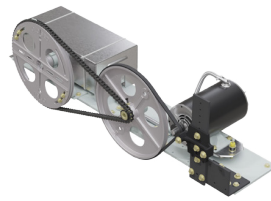
Partnering with the industries best and most widely used suppliers, coupled with Fujitec's quality installation.

Keep Your System Safe, Reliable & Relevant
Smart Technology | Non-Proprietary | Cost Effective | Sustainable



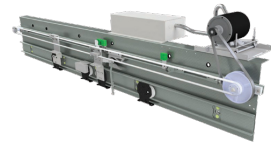
www.fujitecamerica.com | info@us.fujitec.com

CLOSED-LOOP DOOR OPERATOR (GAL)



MOVFR II (Harmonic)

- Heavy-duty 1/2 HP, 230 volt AC, 3-phase, 60 Hz, 1140 RPM
- PC board with a variable frequency (VVVF) closed loop drive provides consistent door timing
- Center Parting & Single Side Slide



Optional - MOVFE 2500-HL (Linear)

- Optimizes door operation
- Auto-fallback to reduce power mode if sensors or encoder fail
- 'Plug-and-Play' infrared detector edges
- Universal inputs & output

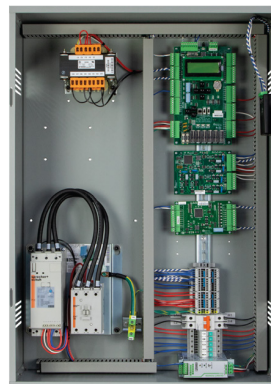
SLIDE/ROLLER GUIDES (Elsco)



Optional

- Improve ride quality

HYDRAULIC CONTROLLER (SmartRise)



Standard Specifications

APPLICATION	Up to 4500 (lb) • Up to 150 (fpm)
FEEDBACK	Distance & Velocity
DISPATCH	Up to 4 car group
OPENINGS	6
DIMENSIONS	34"H x 24" W x 10" D
CABINET	NEMA 1

Optional

- Monitoring
- Pre-wired inspection box
- Isolation Transformer
- Digital Pressure Sensor
- Emergency Rescue Device
- Voice Annunciator Interface
- Card Reader Access
- Air Conditioning Unit

SUBMERSIBLE POWER UNIT (Unitec)



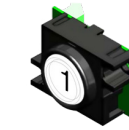
Standard

- Up to 50 HP
- SEIM Pump
- Maxton or EECO Valve
- Oil level detection
- Muffler (vibration & noise reduction)

Optional

- Tank Heater
- Oil Cooler
- Isolation Transformer
- Pressure Gauge

FIXTURES (Innovation)

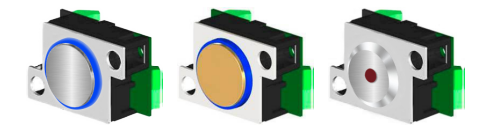


Standard

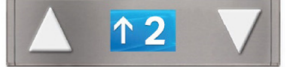


Standard

- Hall lanterns
- Hall position indicators
- Surface mount standard



Optional



Optional

- Vandal resistant or flush
- Combination hall lantern
- LCD position indicators
- Standard or vandal resistant
- Flush mount optional



Standard

- Surface mounting
- Local fire code compliant

Optional

- Flush mount w/box
- Jurisdiction specific engraving
- LCD position indicator



Standard



Optional

- LCD position/direction indicator
- Durable buttons & switches
- Choice of illumination
- Emergency light
- Emergency phone
- Service cabinet
- Local fire code compliance
- Jurisdiction specific engraving
- Auxiliary Car Station

Hydraulic Elevator Modernization

Fujitec delivering a complete modernization package with state-of-the-art controls, closed-loop door operator, fixtures, power unit and the latest wiring package; providing a dynamic solution with minimal down-time.

AIR PURIFICATION (IONFUL - Fujitec)



Optional

- Reduce liability exposure
- Mitigate airborne pathogens
- Air purification with no ozone